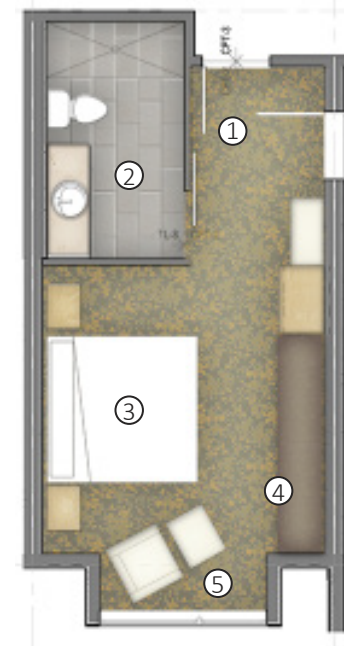
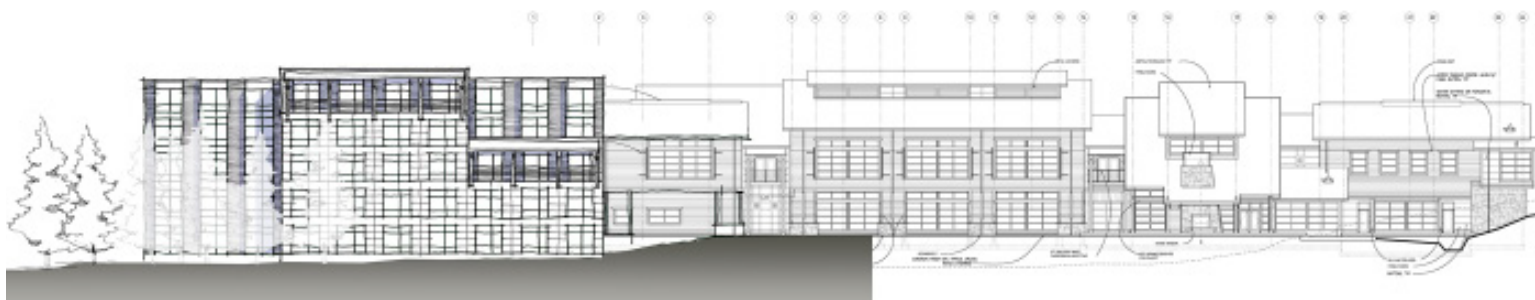


HOSPITALITY

Cedarbrook Lodge Expansion | SeaTac, WA



King Suite Floor Plan

- 1. Entry
- 2. Bathroom
- 3. Sleeping Area
- 4. Desk
- 5. Lounge

GGLO | Completed 2014

Project Description

Originally built in 2002 as a training center for Washington Mutual, the Cedarbrook Lodge was converted to a public hotel in 2009. Since then it has won several awards, including the #1 Airport Hotel in America by Trip Advisor.

The 2014 expansion includes a 5 story, 63 room guest wing addition, boardroom relocation, and addition of a new spa. The spa is located within the existing building and consists of multiple therapeutic and relaxation services. The design was kept consistent with the Northwest character of the existing structure.

Roles & Responsibilities

Architect & Interior Designer; involved from design development through construction. Executed design refinement, documentation, detailing, and construction administration from both an architectural and interiors perspective.

Revit Model Manager; developed model standards and ensured compliance by the team. Maintained model functionality.

